

# **ENRICHMENT CATALOG FOR SMALL MAMMALS**

**COMPILED BY SMALL ANIMAL RESOURCES**

# WHY IS ENRICHMENT IMPORTANT?

**Our pets naturally spend hours a day foraging, yet they often consume their entire daily diet in 10 minutes or less!**

**Our pets live in highly-controlled environment, and aren't met with natural challenges to make choices about what to do with their time, since their physical and safety needs are met.**

**Although domesticated, our pets still have a wide variety of natural behavior needs that need to be met!**

**Our pets are left with a significant portion of their day where they normally would be foraging or being challenged in their environment. Enrichment helps us provide the mental stimulation they crave!**



# HOW DO THESE ACTIVITIES HELP?

**The majority of these activities will help improve your pet's mental and behavioral welfare in many ways including:**

- Increasing foraging time: Your pet naturally would spend hours foraging, and consuming their food quickly leaves them with lots of time to fill. These activities help fill that time!
- Reduce neophobia: *Neophobia* is the fear of novel things and situations. Small mammals are prey species, so neophobia is a survival strategy. In our homes, our pets have nothing to fear, so pairing new objects and situations with treats will help reduce their fear of new things. The more you do this, the more they will generalize their good feelings to all new things, ultimately reducing stress and improving welfare.
- We make most of our pet's choices for them, which can lead to a bit of a boring existence! By providing them with activities where they make choices by trying out different ways of accessing food, they learn to make choices and be successful, improving confidence and overall welfare.
- Our pet's problem-solving abilities improve the more they are presented with activities and are successful at solving them.

# CONTRA- FREELOADING

***Contra-freeloading* is the natural preference of animals to work for their food rather than given the choice between working for it and a “free meal.”**

**Many studies have demonstrated that animals prefer to work for their food, so let's ditch the bowls and put them to work!**

# GUIDE

Each activity/toy will list:

- Supplies needed
- How to make it
- Behavior goals
- Safety tips

**Make sure to carefully supervise ALL activities with your pet until you feel comfortable that they will safely interact with it.**



# SPECIAL NOTE ON TREATS

**The majority of these activities involve treats and food.**

**The photos and activities are sometimes specifically for certain food types, such as fresh veggies.**

**Food types for each activity are listed as examples only, and do not suggest that they can be fed to all species.**

**It is assumed that you know the proper diet for your pet and will avoid/use the treats that are healthy for them.**

**Be mindful that many treats are marketed for animals for which they are not safe. Make sure to research the proper diet for your pet.**



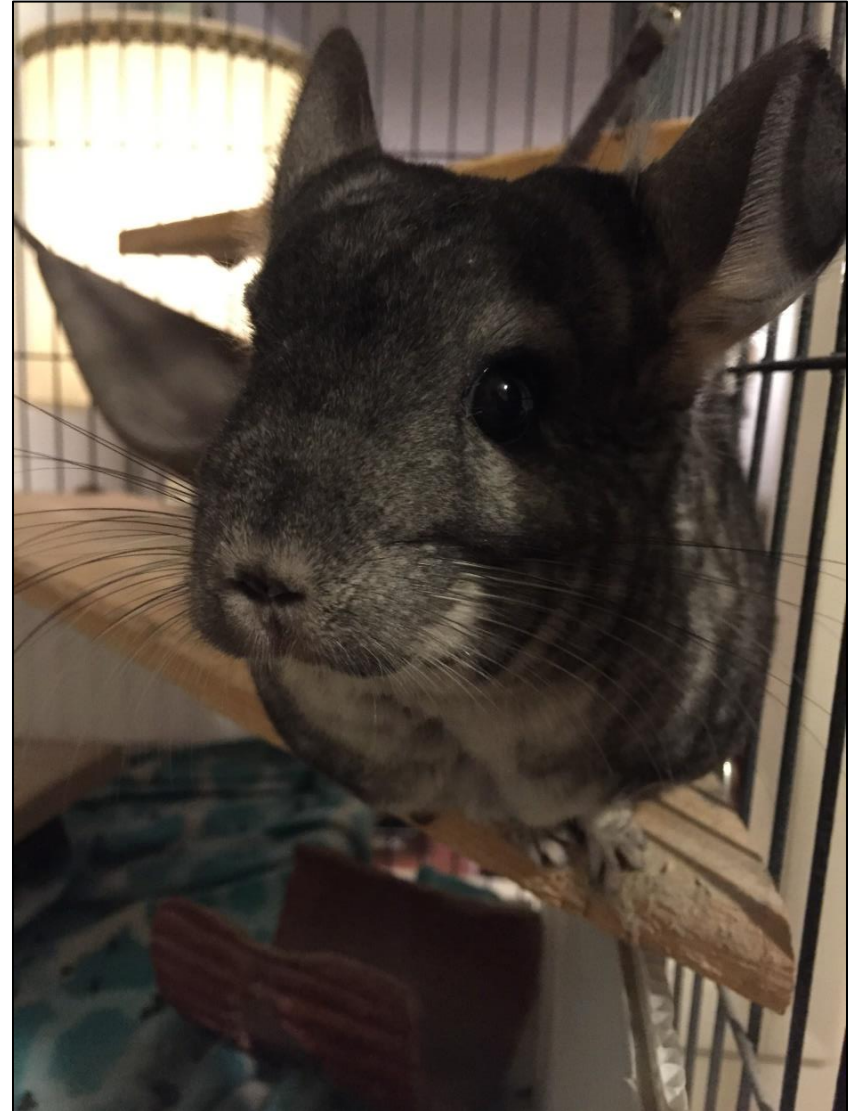
# SPECIAL NOTE ON CHINCHILLAS

**Chinchillas have special dietary requirements, and may not be able to use all of the activities shown in this catalog. (Veggie cone, veggie-stuffed cardboard, etc.)**

**Chinchillas should not be fed any fresh produce, sugary foods, seeds, etc.**

**It is up to you to know and use chinchilla-safe foods in your enrichment items.**

**Any *edible* item should be removed from your chinchilla's housing once they are done with the food (cardboard, paper, paper bags, etc.) OR they begin to eat it.**



# SPECIAL NOTE ON PLASTIC TOYS AND CHINCHILLAS AND GERBILS

Chinchillas and gerbils are *powerful* chewers and should never have unsupervised access to plastic, which can cause **GI blockages**.

- Plastic toys can be given and used, but only under supervision.
- Toys should be removed if your pet begins to chew them.
- It is up to you to keep your pet safe!





# FINAL NOTE ON TOYS AND SAFETY

Many toys are marketed for small mammals that are not safe for them.

Be sure to check toys for potential hazards, such as places your pet can get caught, hidden glue, or other unsafe materials.

**ALWAYS SUPERVISE YOUR PET** when you introduce a new toy!

Safety tips are given for each activity, with problems with each toy noted, but these warnings are not an exhaustive list, and other risks may be present. You are ultimately responsible for your pet's safety.

(c) Small Animal Resources



# TREAT-STUFFED CARDBOARD TUBE

## Supplies needed:

- Veggies/treats
- Toilet paper tube (no glue!)

## How to make:

- Stuff veggies into tube and serve!
- \*Be sure not to pack the tube so tightly that your pet can't get the veggies out!\*
- \*Pack more loosely for inexperienced puzzle solvers

## Behavior goals:

- Increase foraging time
- Tunneling/burrowing

## Safety tips:

- For small pets, cut in half to prevent them from getting stuck when they burrow in.
- Remove if your pet eats the cardboard!
- Hedgehogs are well-known for getting these stuck on their heads-cut theirs in half!



# MAZE-A-LOG TREAT CHALLENGE

## Supplies needed:

- Your pet's diet
- Rosewood Boredom Breaker Maze-a-Log Treat Challenge

## How to make:

- Sprinkle pellets around the board and serve!

## Behavior goals:

- Increase foraging time
- Engage nose to search holes for food

## Safety tips:

- This product contains lots of glue. SUPERVISE your pet very carefully when using this product, and remove immediately if they show interest in nibbling anything other than food.
- Supervise small pets (hamsters, mice, gerbils) to ensure they don't get stuck in the holes!



# HAY-STUFFED CARDBOARD TUBE

## Supplies needed:

- Toilet paper tube
- Hay
- Dry treats (pellets, herbs, rose hips, seeds, etc.)

## How to make:

- Stuff one end of the tube with some hay
- Sprinkle in your treats
- Stuff the other end with hay and serve!
- \*Tip: Make sure not to pack it too tightly to prevent your pet from giving up!
- \*Tip: Softer hays are often better for this as they have shorter strands which are easier for your pet to remove

## Behavior goals:

- Increase foraging time
- Plucking grasses
- Tossing (rabbits)
- Burrowing/tunneling (mice, gerbils, hamsters)

## Safety tips:

- Cut in half for hedgehogs, mice, hamsters, rats, and gerbils to prevent them from getting stuck



# CONE OF TREATS

## Supplies needed:

- Plastic cones with slats
- Leafy greens

## How to make:

- Slide the leaves into the cone slats
- Long leaves can go in one side and out the opposite slat

## Behavior goals:

- Increase foraging time
- Reaching/standing to reach food

## Safety tips:

- Supervise to ensure plastic doesn't get chewed, and remove if needed.



# TRIXIE FLIP BOARD

## Supplies needed:

- Trixie Flip Board
- Treats or pellets

## How to make:

- Simply add your treats and cover them with each door!

## Behavior goals:

- Increased foraging time
- Problem-solving

## Safety tips:

- Supervise as always until you feel comfortable leaving this with your pet.



# HAY-STUFFED BALL

## Supplies needed:

- Cat ball with large holes
- Hay
- Dry treats

## How to make:

- Stuff some hay into the ball to block about half the holes
- Sprinkle in treats (you can alternate hay and treats to create “layers”)
- Stuff with hay to block the rest of the holes and serve!
- \*Tip: Do not pack the hay too tightly, making it difficult for your pet to pull it out
- \*Tip: Soft hays work well for this activity

## Behavior goals:

- Increase foraging time
- Grass-plucking
- Digging/foraging

## Safety tips:

- Supervise small pets very carefully with this to ensure their heads do not get stuck in the holes.
- Supervise problem-solving techniques of pets that will use their paws to extract the hay to ensure they won't get their paws stuck or caught.



# ICE CUBE TRAY FEEDER

## Supplies needed:

- Ice cube tray

## How to make:

- Sprinkle treats in and serve!

## Behavior goals:

- Increase foraging time

## Safety tips:

- Remove if your pet begins to chew the plastic!
- Supervise extra small pets to ensure they don't get stuck in the holes!





# WHIFFLE BALL FEEDER

## Supplies needed:

- Whiffle ball
- Small, dry treats

## How to make:

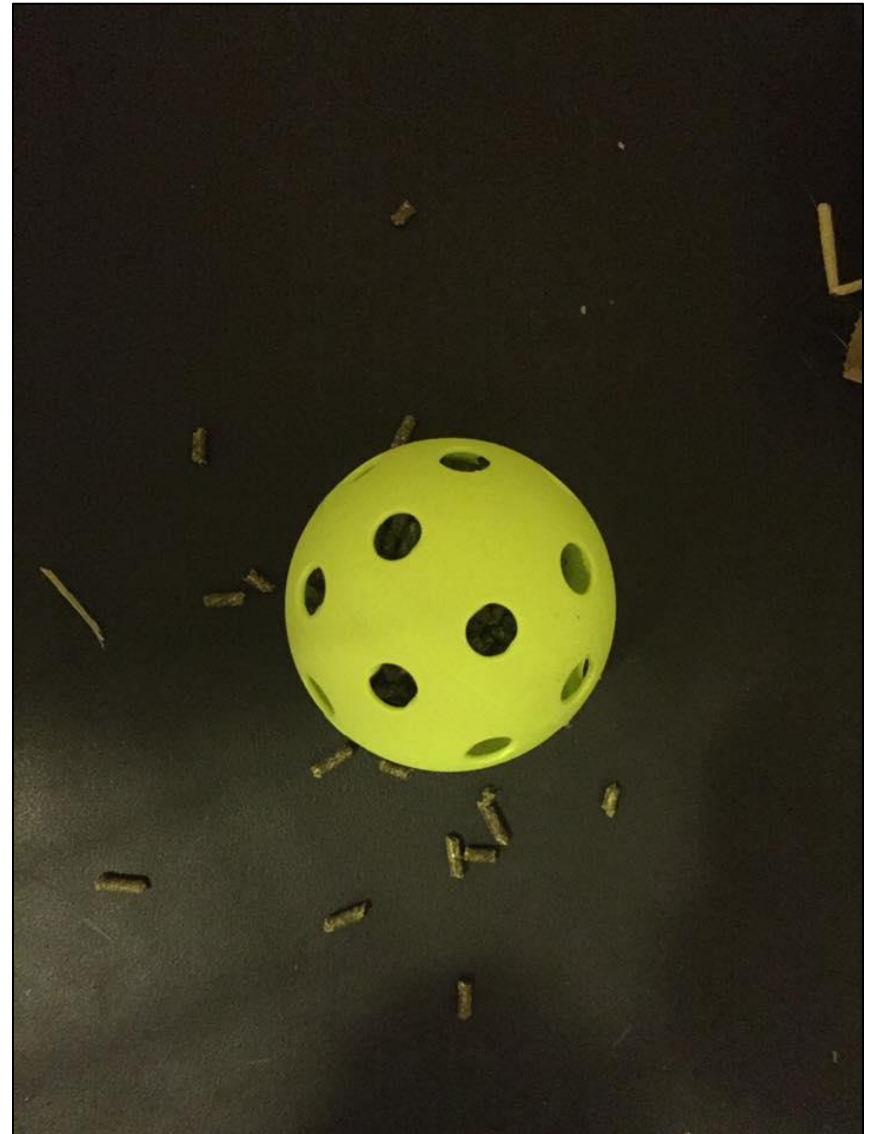
- Cup your hand around the bottom of the whiffle ball to block as many of the holes as you can.
- Place the treats in the holes and serve!

## Behavior goals:

- Increase foraging time
- Rolling and nose bumping (guinea pigs)

## Safety tips:

- Observe your pet solving this to ensure they don't get their paws stuck in the holes
- If you have a very small pet, (mice, gerbil, dwarf hamster, etc.) make sure the whiffle ball doesn't have holes large enough for them to fit their heads through.



# CLASSIC SLOW FEEDER

## Supplies needed:

- Food tray, trough, bowl, or dish
- Balls
- Treats

## How to make:

- Sprinkle treats in the dish
- Place balls on top of the food and serve!
- For easily discouraged pets, use less balls so they move in the dish more easily.

## Behavior goals:

- Increased foraging time
- Slow down eating
- Foraging behaviors (pushing, sniffing, etc.)

## Safety tips:

- If using whiffle balls, supervise to ensure heads and paws can't get stuck in the holes!
- Tennis balls can be used, but remove if your pet chews the fibers, and supervise very small pets to ensure fibers don't wrap around their paws.
- Ensure the balls used aren't too heavy if your pet is very small!



# DISH RACK FEEDER

## Supplies needed:

- Dish rack
- Clothespins, zipties, snap clips

## How to make:

- Secure the bottom of the basket to the side of your pet's home.
- Fill with veggies, hay/pellets/herbs, etc.
- Flip the dish rack up against the wire side and secure.

## Behavior goals:

- Increase foraging time.
- Simulate natural foraging behavior of plucking plants

## Safety tips:

- Ensure the holes in the dish rack are not large enough to get your pet's paws or head stuck.
- When using clothespins, place the wire of the dish rack in the hole of the clothespin that forms when it is fully closed. Clothespins should not be secured in a semi-open way where your pet can get pinched.
- Beware of using zipties with pets that eat plastic.
- Be sure to secure dish rack in a way that prevents gaps between wall and rack that your pet could get caught in.



# WHEEKY TREAT BALL

## Supplies needed:

- Wheezy treat ball
- Pellets, seeds, or other dry treats

## How to make:

- Adjust the opening
- Fill with treats
- Re-adjust the opening to desired difficulty and serve!

## Behavior goals:

- Increase foraging time
- Elicit natural nose bumping behavior (rabbits, guinea pigs)
- Improve problem-solving skills

## Safety tips:

- Be mindful of opening size and the size of the pet's head and paws (especially with very small pets and pets that use paws to manipulate

toys)



# NATURE FIRST WILLOW SPIRAL

## Supplies needed:

- Nature First Willow Spiral
- Pellets or small, dry treats
- Twine

## How to make:

- Use your hand to cup the bottom and cover as many of the holes as you can.
- Fill with treats
- Hang feeder with twine on your pet's housing

## Behavior goals:

- Increase foraging time
- Increase physical effort required to earn food (exercise)

## Safety tips:

- Make sure that the twine is out of reach of your pet to prevent their head or paws getting stuck in the loop.
- Carefully supervise with extra small pets, such as gerbils, dwarf hamsters, rats, and mice to ensure they can't get their paws in the slats in the feeder.



# HANGING VEGGIES

## Supplies needed:

- Clothespins
- Veggies

## How to make:

- Clip veggies to the side of your pet's housing

## Behavior goals:

- Increase foraging time
- Elicit natural searching and reaching behaviors

## Safety tips:

- Ensure that your pet cannot reach the clothespins.
- Guinea pigs have inflexible spines and small feet, so hang the veggies a bit lower for them to prevent falling and potential injury.



# LIVING WORLD TEACH 'N TREAT

## Supplies needed:

- Living World Teach 'n Treat
- Pellets, herbs, seeds, small veggies (peas, corn, etc.)

## How to make:

- This toy comes with 3 different puzzles-follow instructions to set-up puzzles.
- Fill holes with treats and serve! (Don't fill the whole way for sliding activities.)

## Behavior goals:

- Increase foraging time.
- Improve problem-solving skills.

## Safety tips:

- Observe pets with small paws (rats, hamsters, mice, gerbils, etc.) to ensure they won't get them stuck under the frame or underneath the puzzle.
- The bottom of the puzzle has suction cups to provide additional difficulty-remove if your pet is likely to flip the puzzle and chew them.



# DOG PUZZLES

## Supplies needed:

- Any dog puzzle

## How to make:

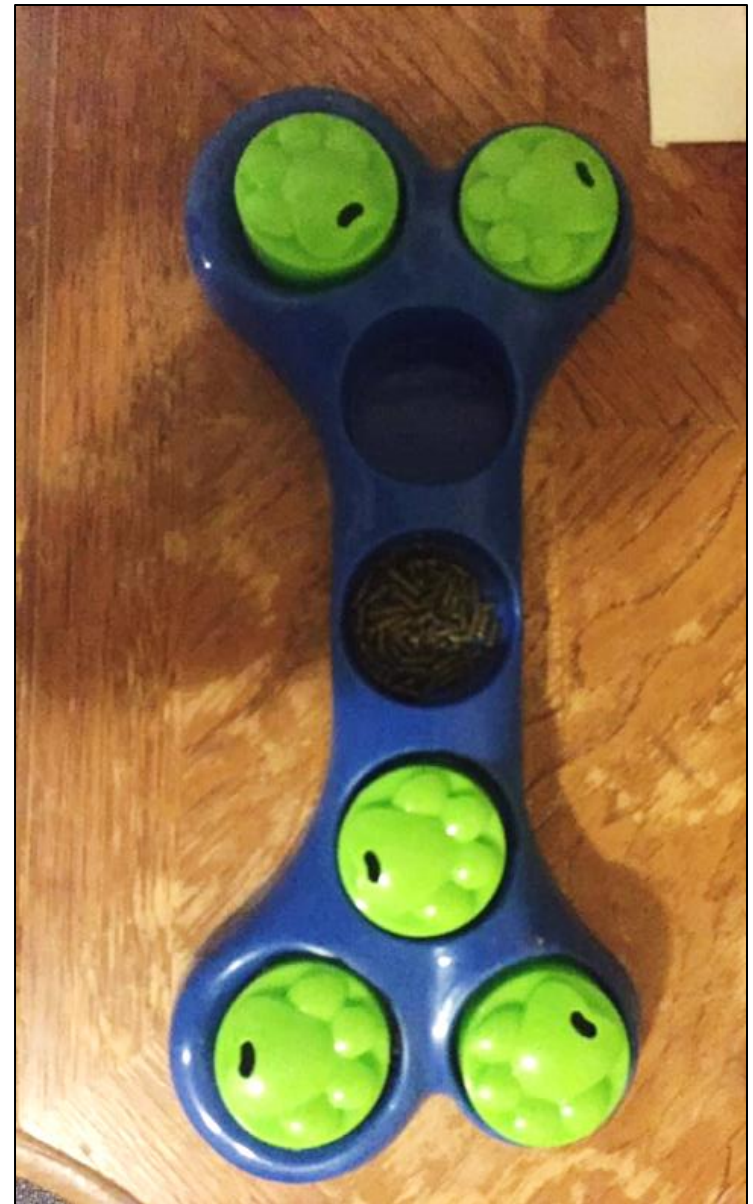
- Depends on the puzzle!

## Behavior goals:

- Increase foraging time
- Improve problem-solving abilities
- Many puzzles can elicit natural behaviors

## Safety tips:

- Always be mindful of your pet's unique anatomy and potential chewing hazards and risks of paws or heads getting stuck.
- Because dog puzzles are often bigger than the pets we offer them to, ensure that your pet cannot get stuck inside of the puzzle itself.





# MUFFIN TIN GAME

## Supplies needed:

- Plastic egg crate or ice cube tray
- Small balls (plastic or “homemade” of paper)
- Treats!

## How to make:

- Place treats in the holes.
- Cover the treats with balls.
- For “beginners” stack the treats high to allow the ball to be easily moved.
- Paper balls may be easier for pets to remove because they can grip them more easily.

## Behavior goals:

- Increase foraging time
- Improve problem-solving abilities

## Safety tips:

- Beware of using used paper egg crates as they may have bacteria from the eggs on them.



# RUMMAGING BOWL

## Supplies needed:

- Large bowl
- Small plastic balls
- Treats

## How to make:

- Place treats in the bowl.
- Add balls on top.
- Tip: Beginners should start with fewer balls to reduce difficulty.

## Behavior goals:

- Increase foraging time.
- Create a more “natural” foraging experience (pushing through Earth to reach desired foods)
- Improve problem-solving abilities for low-motivation foragers.

## Safety tips:

- For extra small pets, ensure they can't get trapped in a large bowl under the plastic balls.



# TREATS UNDER TROUGH

## Supplies needed:

- Plastic trough or paper plate
- Treats

## How to make:

- Place treats on floor
- Place trough on top!
- Tip: Pets that live on a substrate will have a more stimulating foraging experience.

## Behavior goals:

- Increase foraging time.
- Create natural foraging experience for small pets that live on a substrate.

## Safety tips:

- Ensure extra small pets can't get caught under the trough.



# CARDBOARD BOX

## Supplies needed:

- Empty trash or plastic bag box
- Hay (optional)
- Treats

## How to make:

- Stuff box with treats and serve!

## Behavior goals:

- Increase foraging time.

## Safety tips:

- Ensure your pet cannot get stuck in the box.
- If using hay, soft hays (such as orchard grass) decrease the risk of eye injuries.



# TOSSING FEEDER

## Supplies needed:

- Plastic golf balls
- Twine
- Pellets

## How to make:

- Thread twine through the balls, tying a tight knot at the end.
- Fill holes with pellets.
- Tip: Create variability by tying knots at different ends to make differently-shaped toys.

## Behavior goals:

- Increase foraging time
- Elicit natural tossing behavior (rabbits)

## Safety tips:

- Ensure extra small pets cannot get their heads stuck
- Supervise to ensure your pet doesn't consume the twine



# SHREDDED PAPER FORAGING ACTIVITY

## Supplies needed:

- Shredded paper
- Container (optional)
- Dry treats

## How to make:

- Place shredded paper in a container, or place heap of it on the floor.
- Scatter treats among the paper.

## Behavior goals:

- Engage nose.
- Increase foraging time.

## Safety tips:

- Supervise to ensure your pet doesn't consume too much of the paper, if they eat it.



# STACKING CUPS

## Supplies needed:

- Stacking cups
- Treats

## How to make:

- Place treats in the cups
- Stack and serve!

## Behavior goals:

- Increase foraging time
- Improve problem-solving abilities
- Elicit natural tossing behavior (rabbits)

## Safety tips:

- Ensure extra small pets don't get stuck in larger cups.



# PAPER BAG FEEDER

## Supplies needed:

- Paper bag
- Scissors
- Hay
- Treats
- Clothespins

## How to make:

- Cut slats in the front of the paper bag.
- Fill with treats or hay and dry treats
- Hang with clothespins (optional)

## Behavior goals:

- Increase foraging time
- Elicit natural chewing and shredding behaviors.
- Increase physical effort required during eating.

## Safety tips:

- Ensure clothespins are out of reach of your pet.
- Use softer hays to reduce risk of eye injury.





# PUMPKIN BOWLS

## Supplies needed:

- Small pumpkins
- Knife
- Spoon
- Treats

## How to make:

- Use a knife to carve off the top of the pumpkin- save if you want to replace it!
- Use the spoon to scrape out the pumpkin guts and seeds, unless your pet would like and can have the seeds!
- Fill with treats and serve!

## Behavior goals:

- Really, this is just a fun way to spoil your pet, especially for the holidays!

## Safety tips:

- Make sure to limit your pet's intake to prevent stomach upset. Keep it fresh in the fridge to feed for multiple days.
- Make sure to remove leaves, seeds, and guts, and only give the seeds back to species that can have them.
- If you give your pet the top to remove themselves, check the stem carefully for mold.
- Wash your pumpkin just like any other vegetable!



# IGLOO

## Supplies needed:

- Plastic igloo
- Anything you want!

## How to make:

- This can be offered as is, upside down, and filled with hay.

## Behavior goals:

- Burrowing, denning
- Foraging

## Safety tips:

- Be mindful of your pet's size and the size of the opening to prevent them from getting stuck!
- Remove if your pet is chewing the plastic.



# CRATE

## Supplies needed:

- Travel crate

## How to make:

- Remove the door so your pet can come and go freely

## Behavior goals:

- Regular exposure to your pet's carrier can help them habituate to it.
- You can provide hay, bedding, treats, and other fun activities to help your pet associate the crate with positive things.

## Safety tips:

- Remove the door! It can't be said enough as the risk of your pet getting accidentally trapped is high.
- Ensure that your pet cannot climb on top of its crate and escape from its housing.
- If your crate has wire holes, do not leave your pet unsupervised with it to prevent paws getting stuck.



# BALL

## Supplies needed:

- Ball

## How to make:

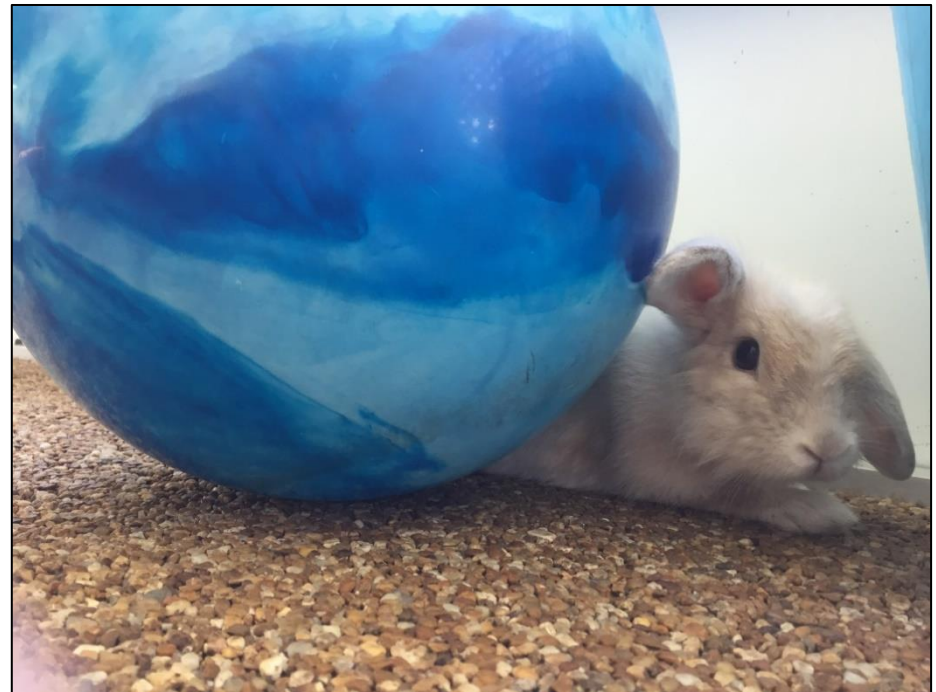
- No assembly required!

## Behavior goals:

- Nose bumping/rolling
- Treats can be placed under the ball to teach the pet how to roll the ball.

## Safety tips:

- If you use tennis balls, ensure your pet does not chew the fibers and ensure that extra small pets do not get the fibers caught around their feet.
- Ensure the animal has plenty of space to get away from the ball if it scares them!



# FORAGING CUPS

## Supplies needed:

- Egg color cups
- Treats

## How to make:

- Fill cups with treats
- Scatter

## Behavior goals:

- Increase foraging time

## Safety tips:

- Ensure your pet doesn't chew the plastic, and remove if they do.
- Supervise to make sure they do not get their heads stuck in the cups!



# TREAT KA-BOB

## Supplies needed:

- Kaytee Treat Ka-Bob
- Treats

## How to make:

- Slide treats on the skewer
- Clip skewer to the side of the pet's housing.
- Tip: Make it lower for beginners!

## Behavior goals:

- Increase foraging time
- Elicit natural periscoping foraging behaviors (rabbits)
- Increase physical exercise required during foraging

## Safety tips:

- Do not hang too high for guinea pigs, who have small feet and inflexible spines.



# TREAT “CLOTHESLINE”

## Supplies needed:

- Twine
- Clothespins
- Treats

## How to make:

- Tie ends of twine to either side of pet’s housing. Tie it tight enough to prevent it from slacking when veggies are hung on it.
- Hang veggies using clothespins.

## Behavior goals:

- Increase foraging time
- Increase exercise required while foraging.
- Elicit natural foraging behaviors (periscoping)

## Safety tips:

- Ensure that the clothespins and twine are out of the animal’s reach.
- Ensure that that veggies are not hung so high that your pet will fall while trying to get them.



# SHREDDING WALL

## Supplies needed:

- Tissue paper, newspaper, wrapping paper

## How to make:

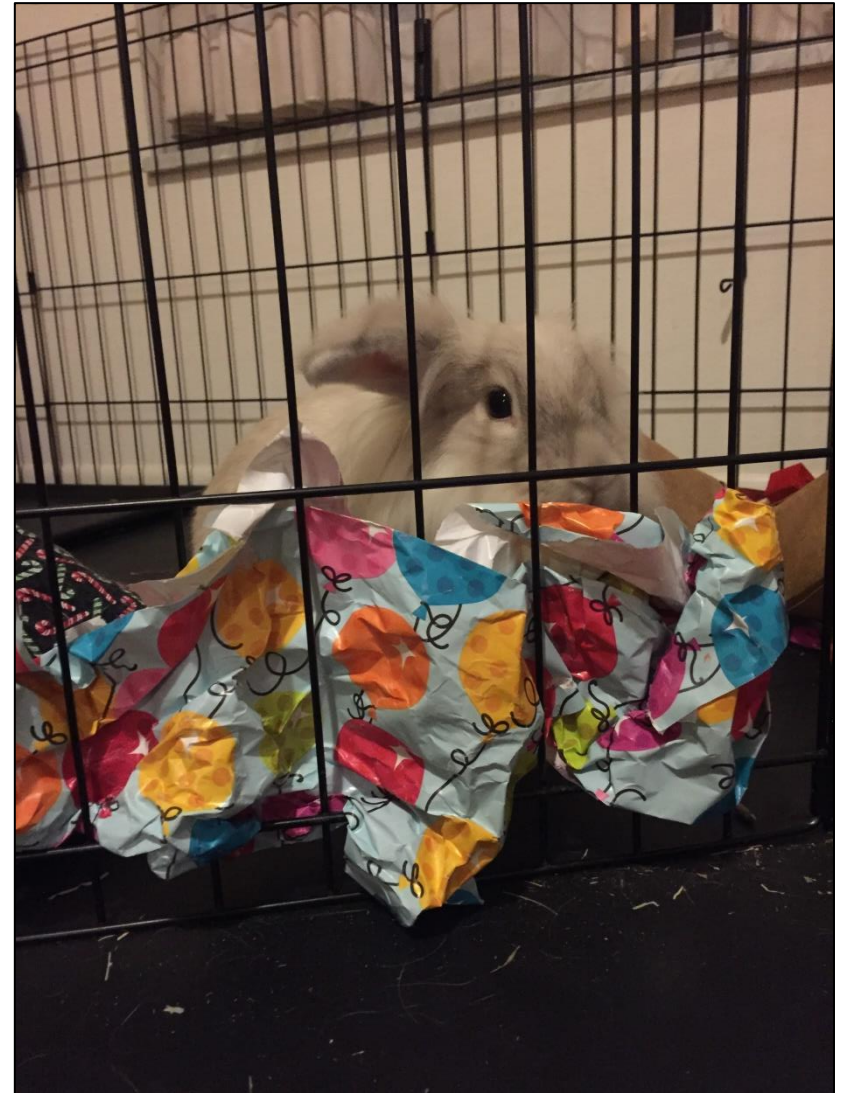
- Weave paper in and out of cage bars

## Behavior goals:

- Redirect chewing of unwanted places.
- Elicit natural chewing and shredding behavior.

## Safety tips:

- Supervise your pet to ensure they are not eating the paper.





# MAKESHIFT HIDEOUT

## Supplies needed:

- Chair, table, anything with height
- Towel, sheet, cloth

## How to make:

- Drape the sheet over the object and pull it up to create various entryways and entryway sizes.
- Extra blankets and towels can be added underneath to create more faux tunnels.

## Behavior goals:

- Elicit natural tunneling and denning behavior.
- Tip: (Female rabbit owners) If you notice intense digging and shredding behavior from your rabbit, this is nesting behavior and can lead to protective behaviors around this space. Try lifting the towel to make it less “cozy” or do not provide your bunny with this activity.

## Safety tips:

- Supervise to ensure that your pet does not chew and consume any of the cloth or flooring underneath.
- Inspect your blankets to ensure there are not holes or loose threads that your pet could get caught on.



# GRASS MATS

## Supplies needed:

- Grass mat

## How to make:

- Serve!

## Behavior goals:

- Elicit natural shredding and digging behavior

## Safety tips:

- None so far!



# PHONE BOOKS

## Supplies needed:

- Phone book

## How to make:

- Serve!

## Behavior goals:

- Digging
- Shredding

## Safety tips:

- Remove any ads that are glued on and the glue that comes with them.
- Ensure your pet isn't consuming the paper.
- Ensure your pet doesn't focus on the "glossy" papers.



# FORAGING BOX

## Supplies needed:

- Box, plastic pan, metal pan, etc.
- Hay or substrate
- Dry treats

## How to make:

- Fill your box with hay or substrate
- Sprinkle in your treats and serve!

## Behavior goals:

- Increase foraging time
- Engage nose
- Elicit natural foraging behavior (using nose and paws to dig through substrate to find food)
- If your pet accidentally mistakes their foraging box for a litter box, use a box that is too small for them to sit in.

## Safety tips:

- Use soft hays to prevent eye injury.

(c) Small Animal Resources



# DIG BOX

## Supplies needed:

- Large box or pan
- Shredded paper, substrate, tissue paper
- Dry treats

## How to make:

- Fill the box with your substrate
- Sprinkle in treats and serve!
- Tip: If your pet is comfortable being picked up, a deep plastic tote allows for crazy digging while keeping the surrounding area clean!
- Tip: Plastic storage totes with tops can be used for “reusable” dig boxes!

## Behavior goals:

- Elicit natural digging and burrowing behavior
- Tip: If your pet mistakes their box for a litter box, try a different substrate that is very different from their litter.

## Safety tips:

- Avoid using dirt, cat litter, or sand as ingestion can cause serious GI issues.



# PEGBOARD

## Supplies needed:

- Metal or plastic pegboard
- Veggies or treats with stems

## How to make:

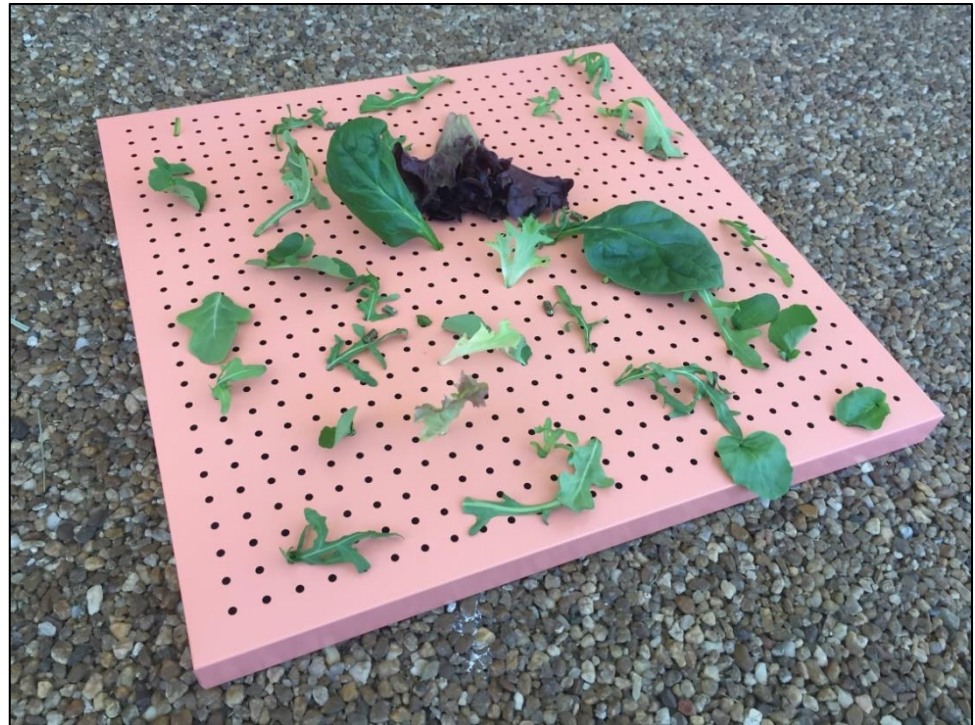
- Put stems into holes on pegboard and serve!
- Hang for another foraging option

## Behavior goals:

- Natural grazing and plucking behaviors
- Increase foraging time

## Safety tips:

- Avoid pegboards that are made of materials that your pet can easily ingest, such as foam or corkboard
- If hung, hang securely to ensure your pet can't knock the board on themselves while pulling out the veggies.



# CHILD OR CAT TENTS/TUNNELS

## Supplies needed:

- Tunnels or tents designed for kids/cats

## How to make:

- No assembly required!

## Behavior goals:

- Exploring
- Exercise

## Safety tips:

- Supervise to ensure your pet doesn't chew or eat the fabric.
- Be mindful of any velcro straps and ensure they don't get caught on our pet's fur.



# FEEDER BALL RATTLE

## Supplies needed:

- Practice golf balls
- Twine
- Pellets or small, dry treats

## How to make:

- String twine through one ball and tie knot to create one end.
- Move down an inch or two of the twine and tie another knot larger than the holes in the ball.
- Add another ball to the string.
- Repeat steps 2 and 3 to create whatever size rattle you'd like!
- Tie a large knot at the end.
- Fill with pellets or dry treats and serve!
- Alternate: Tie one end to the side of your pet's home.

## Behavior goals:

- Natural tossing behavior (rabbits), or pushing/rolling (guinea pigs/rabbits)
- Increase foraging time
- Increase problem-solving abilities

## Safety tips:

- Supervise to ensure your pet won't chew and consume twine.
- Ensure the twine between the balls is not long enough to wrap around your pet's neck.





# ROSEWOOD VEG PACK SACKEROO

## Supplies needed:

- Rosewood Veg Pack Sackeroo
- Hay
- Dried herbs, pellets, dry treats

## How to make:

- Fill with hay.
- Sprinkle in dry treats.
- Tie to one side of your pet's home.

## Behavior goals:

- Increase foraging time
- Increase physical exertion required to obtain food
- Engage nose

## Safety tips:

- Ensure your pet doesn't consume any part of the burlap.
- Use soft hays to prevent eye injuries.
- Trim strings around opening to prevent them from wrapping around paws or head.
- Supervise your pet and observe their foraging style. Make sure you don't hang the sack too high, increasing the risk of strangling.



# TRIXIE TURN AROUND

## Supplies needed:

- Trixie Turn Around
- Dry treats

## How to make:

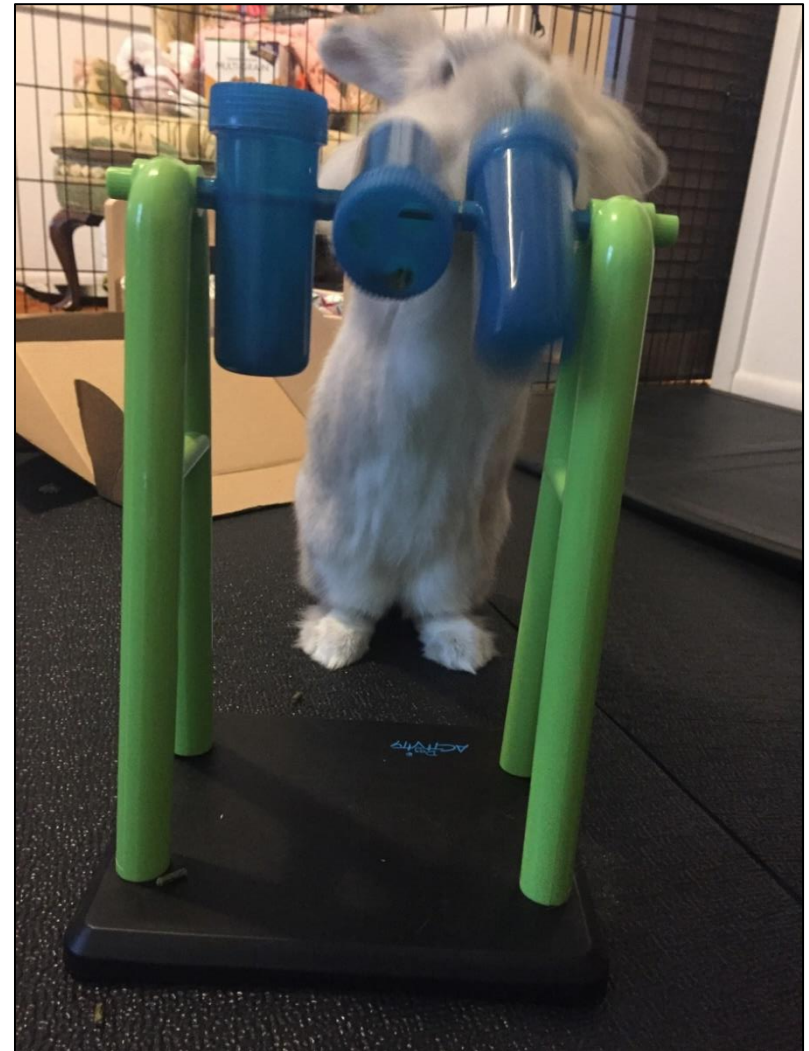
- Fill tubes with treats.
- Assemble as instructed.
- Tip: For beginning problem-solvers, don't put tops on the tubes.

## Behavior goals:

- Increase foraging time.
- Increase physical exercise.
- Improve problem-solving abilities.

## Safety tips:

- Supervise to make sure your pet won't pull the toy down on themselves.



# TRIXIE POKER BOX

## Supplies needed:

- Trixie Poker Box
- Treats

## How to make:

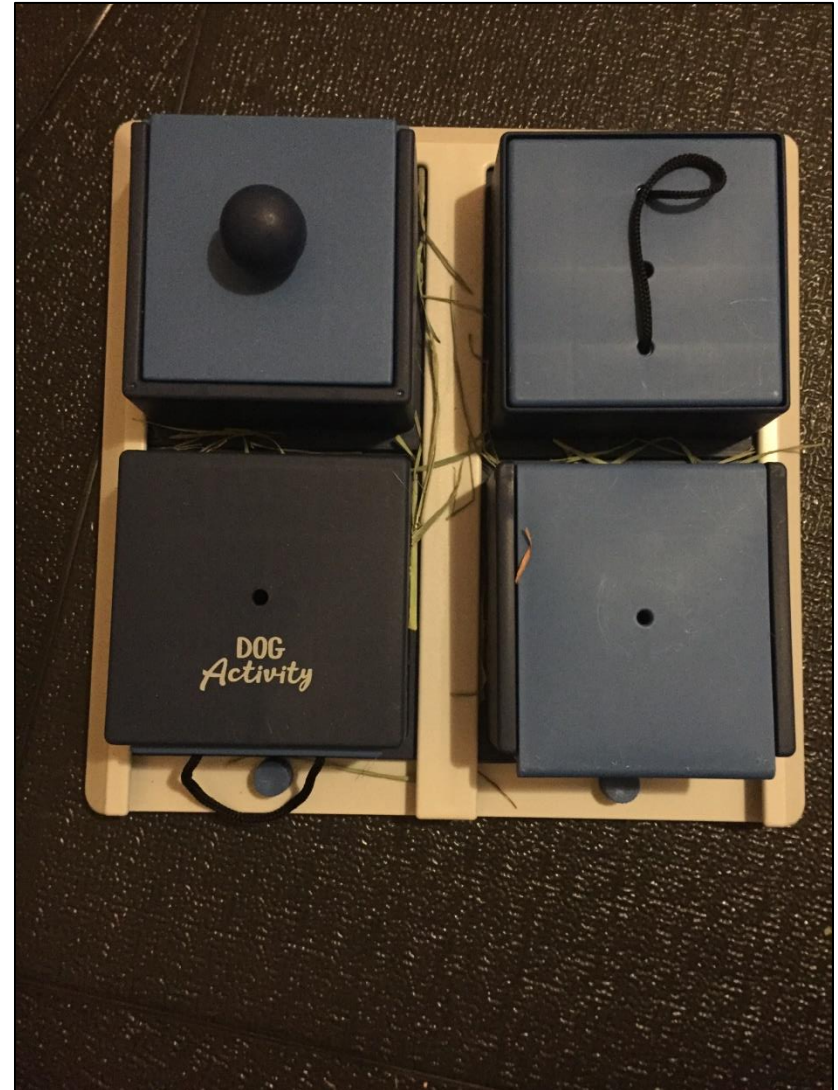
- Fill boxes with treats and serve!
- Alternate: Fill with hay and sprinkle with treats for increased complexity!

## Behavior goals:

- Increase problem-solving abilities
- Increase foraging time

## Safety tips:

- Ensure your pet doesn't consume string handles.
- Ensure extra small pets don't crawl in and get stuck in compartments.



# ROLLING FEEDER

## Supplies needed:

- Paper towel roll or PVC
- Scissors or drill
- Whiffle balls to “cap” ends
- Seeds or pellets
- Twine

## How to make:

- “Drill” holes into tube
- Cap one end with a whiffle ball.
- String twine through one whiffle ball and tie to one end of pet’s home.
- Fill tube with treats.
- String through other whiffle ball and “cap” the other end.
- Tie to other end of pet’s house.

## Behavior goals:

- Increase foraging time
- Increase exercise required while foraging
- Improve problem-solving ability

## Safety tips:

- Heavy pulling may cause sides of pens or cages to bow, so supervise carefully.
- Ensure your pet doesn’t consume the twine.
- Don’t hang too high, increasing the chance that your pet will lose their balance while playing.



# CLICKER TRAINING

- **Studies have demonstrated that positive reinforcement training is animals' preferred form of enrichment!**
- **Clicker training is a great way to mentally stimulate your pet.**
- **Clicker training can help you accomplish everything from simply improving your relationship with your pet to teaching tricks to building cooperative behavior during veterinary exams!**
- **To learn more about clicker training your small pet, visit [facebook.com/smallanimalresources](https://www.facebook.com/smallanimalresources)**



# RESOURCES

- To learn more about behavior welfare for your small pets, check out [facebook.com/SmallAnimalResources](https://facebook.com/SmallAnimalResources).
- Contact us at [smallanimalresources@gmail.com](mailto:smallanimalresources@gmail.com)

